

# Heavy Duty Anchor



## Fasteners

Heavy Duty Anchor for cracked concrete

### Material specifications

Coatings	Galvanized, Hot-Dip Galvanized*
----------	------------------------------------

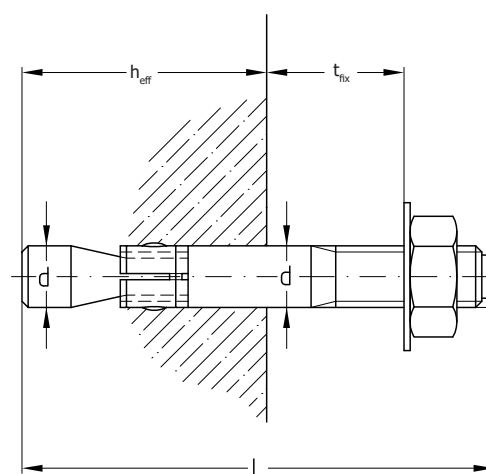


### Applications

- Anchorage of medium to heavy weight pipeline, ventilation ducts & sprinkler systems

### Features & Benefits

- European Technical Approval for cracked concrete (Option 1)
- Specially designed expansion clip ensures safer loads transfer into the concrete and enables high load-bearing capacity.
- Suitable for push through and stand-off installation
- Quick and easy installation



### Select Variant

Article No.	Product Description	Overall Length (mm)	Drill Hole Dia (d) (mm)	Drilling depth (mm)	Usable length (tfix) (mm)	Effective anchorage depth heff (mm)	Pack Size (Nos)	Approved tensile load* (kN)	Approved shear load* (kN)	Installation torque (Nm)	Wrench Size (Nm)
Galvanized (vz)											
3100807	FX Heavy Duty Anchor, M8 x 70/5	70	8	65	5	48	100	1.7	4.4	20	13
3100808	FX Heavy Duty Anchor, M8 x 80/10	80	8	65	10	48	100	1.7	4.4	20	13
3100809	FX Heavy Duty Anchor, M8 x 95/25	95	8	65	25	48	100	1.7	4.4	20	13
3100811	FX Heavy Duty Anchor, M8 x 115/45	115	8	65	45	48	100	1.7	4.4	20	13
3100816	FX Heavy Duty Anchor, M8 x 165/95	165	8	65	95	48	50	1.7	4.4	20	13
3101009	FX Heavy Duty Anchor, M10 x 95/15/35	95	10	80/60	15/35	60/40	100	3.6	6.9	45	17
3101011	FX Heavy Duty Anchor, M10 x 110/30/50	110	10	80/60	30/50	60/40	50	3.6	6.9	45	17
3101012	FX Heavy Duty Anchor, M10 x 125/45/65	125	10	80/60	45/65	60/40	50	3.6	6.9	45	17
3101014	FX Heavy Duty Anchor, M10 x 140/60/80	140	10	80/60	60/80	60/40	50	3.6	6.9	45	17
3101016	FX Heavy Duty Anchor, M10 x 160/80/100	160	10	80/60	80/100	60/40	50	3.6	6.9	45	17
3101018	FX Heavy Duty Anchor, M10 x 180/100/120	180	10	80/60	100/120	60/40	25	3.6	6.9	45	17
3101211	FX Heavy Duty Anchor, M12 x 110/15	110	12	90	15	70	50	6.7	10	60	19
3101212	FX Heavy Duty Anchor, M12 x 125/30	125	12	90	30	70	50	6.7	10	60	19
3101214	FX Heavy Duty Anchor, M12 x 145/50	145	12	90	50	70	25	6.7	10	60	19
3101216	FX Heavy Duty Anchor, M12 x 165/70	165	12	90	70	70	50	6.7	10	60	19
3101218	FX Heavy Duty Anchor, M12 x 185/90	185	12	90	90	70	50	6.7	10	60	19
3101613	FX Heavy Duty Anchor, M16 x 130/15	130	16	110	15	80	25	9.5	16.2	80	24
3101614	FX Heavy Duty Anchor, M16 x 145/30	145	16	110	30	80	25	9.5	16.2	80	24
3101618	FX Heavy Duty Anchor, M16 x 180/60	180	16	110	60	80	25	9.5	16.2	80	24

\*Available on request

\*\*The admissible loads apply for single anchors in concrete strength class  $\geq$  C20/25 (B25 for axially applied tension and shear without the influence of axial and edge spacings. The safety coefficient according to ETA is included.