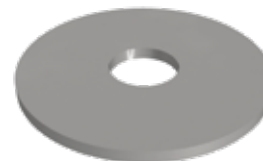


## Fasteners

Auxiliary element in threaded connections

### Material specifications

<b>Material</b>	Steel
<b>Coatings</b>	Galvanized, Hot-Dip Galvanized



### Applications

- Distribution of the the load from the nut or bolt over larger area of FXR Mounting Rail

### Features & Benefits

- High quality washer for uniform distribution of load to FXR mounting rails
- Reduces the probability of the joint loosening

### Select Variant

Article No.		Product Description	Diameter	Outer Dia. (mm)	Thickness (mm)	Pack Size (Nos)
Galvanized (vz)	Hot Dipped Galvanised (fvz)					
653060	653061	FX Big Washer, M6 x 18 x 1.6mm	M6	18	1.6	100
653065	653066	FX Big Washer, M6 x 24 x 2mm	M6	24	2.0	100
653070	653071	FX Big Washer, M6 x 36 x 2mm	M6	36	2.0	100
653075	653076	FX Big Washer, M6 x 40 x 2mm	M6	40	2.0	100
653080	653081	FX Big Washer, M8 x 24 x 2mm	M8	24	2.0	100
653085	653086	FX Big Washer, M8 x 36 x 2mm	M8	36	2.0	100
653090	653091	FX Big Washer, M8 x 40 x 2mm	M8	40	2.0	100
653095	653096	FX Big Washer, M10 x 24 x 2mm	M10	24	2.0	100
653100	653101	FX Big Washer, M10 x 29 x 2mm	M10	29	2.0	100
653105	653106	FX Big Washer, M10 x 30 x 3mm	M10	30	3.0	100
653110	653111	FX Big Washer, M10 x 36 x 2mm	M10	36	2.0	100
653115	653116	FX Big Washer, M10 x 40 x 2mm	M10	40	2.0	100
653120	653121	FX Big Washer, M10 x 40 x 3mm	M10	40	3.0	100
653125	653126	FX Big Washer, M12 x 36 x 2mm	M12	36	2.0	100
653130	653131	FX Big Washer, M12 x 40 x 2mm	M12	40	2.0	100
653135	653136	FX Big Washer, M12 x 40 x 3mm	M12	40	3.0	100
653140	653141	FX Big Washer, M16 x 40 x 3mm	M16	40	3.0	100